

RD10

2D Desktop Barcode Scanner

Stylish and exquisite design

Smart soft LED light

Wide scan angle



1D/2D



Mobile payment



Auto



Plug and play



32ARM



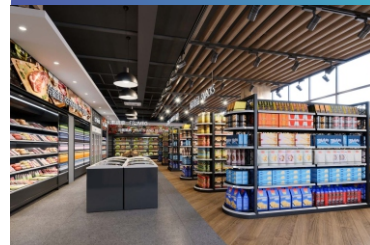
640x480Pixel

Features

- Quick scan speed and easy decoding in milliseconds
- Wide scan angle to capture barcodes from various directions
- Independent technology and core algorithm, support online upgrade
- Smart soft LED light mode to protect your eyes
- Compatible with Linux, Android, Windows XP/7/8/10/MAC OS
- Suitable for retail stores, supermarkets, healthcare system, etc



Applications



SUNLUX IOT TECHNOLOGY (GUANGDONG) INC.

Office Add: Room 1201, Building A, No.76 Xinye Road, Huangpu District, Guangzhou, 511356, China

Tel: +86-20-32053765 Fax: +86-20-82115390 Website: www.xl-scan.com E-mail: overseas01@xl-scan.cn



RD10

Technical Parameters

Performance Parameters

CPU	32-bit ARM
Light Source	White LED (Lighting)
Scan Mode	Automatic, Continuous
Image Size	640x480 Pixel
Scan Speed	60 fps
Minimum Resolution	≥3mil
Depth of Field	0~170mm (13mil EAN13 PCS=90%)
Print Contrast	≥15%
Interface	USB-HID, USB-VCP, RS232
Indicator	LED Indicator and Buzzer
Scan Angle	Skew±65°, Pitch±60°, Roll360°
Decoding Capability	1D: Codabar, Code39, Code32, Interleaved 2 of 5, Industrial 2 of 5, Matrix 2 of 5, Code93, Code128, GS1-128, UPC-A, UPC-E, EAN 8, EAN 13, GS1 DataBar(RSS14), GS1 DataBar Limited, GS1 DataBar Expanded, 2D: PDF417, Micro PDF417, QR Code, Micro QR, Data Matrix, Aztec Code, Maxicode, Han Xin Code



Other Parameters

Size	L × W × H: 98×98×152(mm)
Weight	270g(Including cable)
Case Material	ABS+PC
Input Voltage	DC 5V
Working Current	440mA
Stand-by Current	170mA
Cable	Straight 1.8m
Temperature (Operating)	-10~50°C
Humidity	5% to 95% (non-condensing)
Temperature (Storage)	-20~60°C
Light Levels	0~100,000 Lux

Depth Of Field Performance

Barcode category	Minimum(mm)	Maximum(mm)
CODE 39 4mil	0	70
CODE 39 13mil	30	180
CODE 39 20mil	60	260
EAN 13 4mil	0	70
EAN 13 13mil	0	170
EAN 13 20mil	30	220
CODE 128 4mil	0	80
CODE 128 13mil	0	170
CODE 128 20mil	0	220
QR 6mil	0	60
QR 15mil	0	110
QR 30mil	0	190
PDF417 7.5mil	0	80
DM 5.83mil	0	60
DM 15mil	0	120

*RD10-08/24B-V.1.0.0

