

XL-3020GSQ

2D Embedded Image Scanner

Quick start for reading
Ultra-far depth of field
Image scanning



Auto



ARM



1D/2D

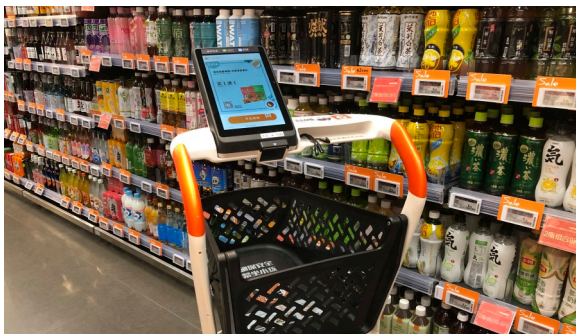


Mobile payment



640x480Pixel

Applications



Features

- ◆ Easy to read 3mil high-precision barcode
- ◆ 100% self-independent technology, support online upgrade
- ◆ Suitable for healthcare, parking systems, subway gates, etc
- ◆ Quickly read 1D/2D paper and mobile phone screen barcode
- ◆ Compatible with Linux, Android, Windows XP/7/8/10/MAC OS
- ◆ Support secondary development, can meet different requirements

SUNLUX IOT TECHNOLOGY (GUANGDONG) INC.

Office Add: 4F, No.7, Kehui First Street, Science Road, Guangzhou, China

Tel: +86-20-32053765 Fax: +86-20-82115390 Website: www.xl-scan.com E-mail: overseas01@xl-scan.cn

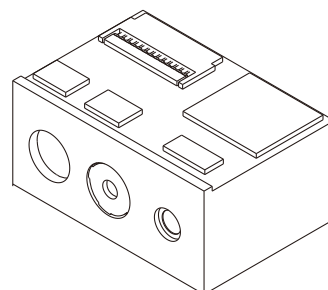


XL-3020GSQ

Technical Parameters

Performance Parameter

| | |
|---------------------|--|
| Light Source | Red LED |
| CPU | ARM |
| Image Sensor | CMOS |
| Scan Mode | Induction / Manual / Command Trigger |
| Image Size | 640x480Pixel |
| Scanning Speed | 60 fps/s |
| Mobile Tolerance | 1m/s |
| Mnimum Resolution | ≥3mil |
| Scanning Angle | Deflection 360° Inclination ±65° Rotation ±60° |
| Decoding Depth | 60~360mm@(EAN 13mil PCS=90%) |
| Decoding Capability | 1D: Codabar, Code11, Code39, Code32, Interleaved 2 of 5, Industrial 2 of 5, Matrix 2 of 5, Code93, Code128, GS1-128, UPC-A, UPC-E, EAN 8, EAN 13, GS1 DataBar(RSS14), GS1 DataBar Limited, GS1 DataBar Expanded, etc 2D: PDF417, Micro PDF417, QR Code, Micro QR, Data Matrix, Aztec Code |



Other Parameters

| | |
|-------------------------|--|
| Size | L × W × H: 21.3×14.5×11.5(mm) |
| Weight | 3.3g |
| Input Voltage | DC 3.3V |
| Working Current | 178mA(Scanner) |
| Quiescent Curren | 52mA(Scanner) |
| Stand-by Current | < 1uA(Scanner) |
| Temperature (Operating) | -10°C~50°C |
| Humidity | 5% to 95% (non-condensing) |
| Temperature (Storage) | -20°C~60°C |
| Light Levels | 0~5000Lux (fluorescence) 0~100,000 Lux (sunlight) |

Interface Definition

Support interface: USB-HID,USB-VCP,TTL

| Pin | Name | Type | Description |
|-----|---------|--------|---|
| ① | NC | | |
| ② | VCC | Power | DC 3.3V |
| ③ | GND | Ground | Ground |
| ④ | RXD | Input | Serial communication data input pin(TTL level) |
| ⑤ | TXD | Output | Serial communication data output pin(TTL level) |
| ⑥ | D- | IO | USB DM |
| ⑦ | D+ | IO | USB DP |
| ⑧ | NC | | |
| ⑨ | BEEP | Output | Sound output pins that require an external buzzer drive circuit |
| ⑩ | LED | Output | Decoder success indicator output pin,requires external LED driver circuit |
| ⑪ | RST_N | Reset | The low level of 10ms drives the device to rest |
| ⑫ | TRIGGER | Input | Read code trigger pin,keep low level effective for 10ms, keep high level normally |

The Depth Of Field Performance

| Type | Minimum(mm) | Maximum(mm) |
|-------------|-------------|-------------|
| EAN13 3mil | 60 | 85 |
| EAN13 5mil | 40 | 140 |
| EAN13 8mil | 40 | 240 |
| EAN13 13mil | 60 | 360 |
| EAN13 20mil | 70 | 500 |
| EAN13 30mil | 110 | 620 |

*XL-3020GSQ-11/22B-V1.0.0

